

# ENDOLINQ™ Irrigation Pump

Product Brochure



# Overview

Designed to deliver powerful, adjustable and steady flow, Endolinq W1 is your ideal choice of Endoscopic Irrigation Pump. Work compatibly with all major endoscopic brands, it helps physicians to swiftly clear out bubbles, blood and other substances that obstruct the view, achieving higher diagnostic accuracy and better outcome.

## Flow adjustments

Bright LED indicator with 10-Level flow control.  
Smart and easy adjustments.

## Safety

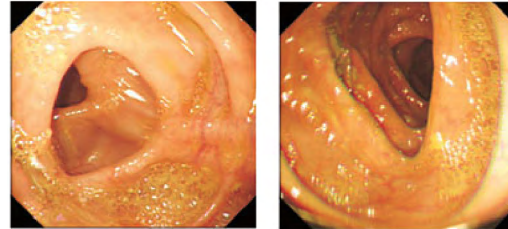
System automatically cut off if connection falls off.

## Auto switch-off

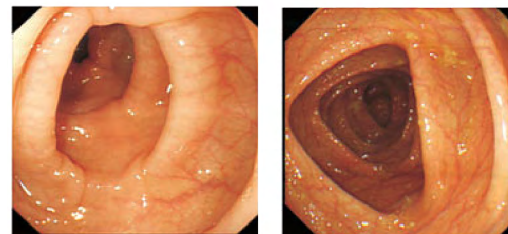
Irrigation automatically stops every 20-second interval.

## Compatibility

Endolinq works with all major endoscopy and colonoscopy brands.



Pre flush



After flush

## Product specifications

### Input and output

**Maximum feeding pressure:**  
<400 kPa  
**Flow rate:**  
0 - 1000 ml/min

### Product size and weight

**Dimensions:**  
324 mm(W) \* 160 mm(D) \* 155 mm(H)  
**Weight:**  
6 Kg

### Function

**Single output duration:** <20s  
**Operation noise:** < 60 dB(A)

Chongqing Jinshan Science & Technology (Group) Co., Ltd.

Address: 18 Nishang Road, Yubei District, 401120 Chongqing, China

Tel: +86-23-86098099 Fax: +86-23-86098082

english.jinshangroup.com

international@jinshangroup.com



Distributed by:

201908